

NU SKIN® RENU HAIR MASK

VISIBLY YOUNGER HAIR IN 7 DAYS

Take hair care to a higher level with Nu Skin conditioners. Delivering softness without compromising shine, these products repair the hair shaft, creating a smooth surface that reflects light more radiantly—increasing the appearance of youthfulness. ReNu Hair Mask locks in luster all week long.



RENU HAIR MASK OVERVIEW

Lock in luster all week long. Your hair works hard for you all week and it's time to return the favor with Nu Skin ReNu Hair Mask. This deep conditioning treatment is formulated with key ingredients to provide critical hydration by penetrating the hair shaft and tripling the strength of damaged hair. Featuring CS7, an innovative cuticle smoothing agent that acts as cuticle glue to seal and strengthen each cuticle, this mask prevents split ends and breakage, making hair smooth, shiny, and manageable for up to seven days. When used weekly, Nu Skin ReNu Hair Mask is your secret weapon to visibly younger hair.

WHY YOU'LL LOVE IT

- Penetrates the hair shaft to hydrate and triple the strength of damaged hair.
- Features CS7 that seals, smoothes, and strengthens each cuticle.
- Repairs the outer shaft of the hair to restore youthful softness and smoothness.
- Improves the look and feel of damaged hair for visibly younger, healthier looking hair when used as part of a system.

WHAT POWERS IT

- Creatine—improves tensile strength of the cortex.
- CS7—smoothes cuticles to provide shine that lasts through repeated shampooing.

HOW TO USE IT

After shampooing, work evenly into wet hair with fingertips, paying special attention to ends or damaged areas. Rinse thoroughly. For best results, start with Balancing Shampoo or Moisturizing Shampoo.

TRY THESE WITH IT

- Balancing Shampoo—provides just the right balance of cleansing and moisturizing, while key nutrients found in cotton bloom extract restore strength to the cortex.
- Moisturizing Shampoo—features cotton bloom extract, natural sterols, and shea butter to cleanse and nourish hair with essential moisture.
- Clarifying Shampoo—provides a deep clean without stripping hair of natural moisturizers; shea butter seedcake extract washes away buildup, including nicotine, chlorine, and environmental pollutants.
- Rich Conditioner—the low pH formula seals the hair cuticle for increased moisture retention, shea butter drenches the hair with lipids that mimic natural oils, and meadowfoam repairs damage and prevents breaking and weakening.

LEARN MORE ABOUT IT

Can I use ReNu Hair Mask more than once a week?

It depends on the kind of hair you have. See the usage chart to find out how often you should use ReNu Hair Mask with your specific hair type.

Can I use ReNu Hair Mask on chemically treated hair?

Since it's a deep conditioner, ReNu Hair Mask is ideal for chemically treated hair. By smoothing the cuticle, CS7 can prolong the vibrancy of permanently colored hair.

Which ingredient is CS7?

In the Ingredients list, CS7 is listed as Hydrogenated Castor Oil/Sebacic Acid Copolymer.

NU SKIN® RENU HAIR MASK

WHAT'S IN IT

Water (Aqua), Cyclopentasiloxane, Stearyl Alcohol, Cyclohexasiloxane, Cetyl Alcohol, Dimethicone, Glyceryl Stearate, Stearamidopropyl Dimethylamine, Hydrogenated Castor Oil/Sebacic Acid Copolymer, Creatine, Hydrolyzed Vegetable Protein PG-Propyl Silanetriol, Panthenol, Lactic Acid, Quaternium-91, Cetrimonium Methosulfate, Cetearyl Alcohol, Citric Acid, Tetrasodium EDTA, Fragrance (Parfum), Methylchloroisothiazolinone, Methylisothiazolinone.

NU SKIN HAIR CARE SYSTEM

COMPLEMENTARY PRODUCTS USAGE CHARTS

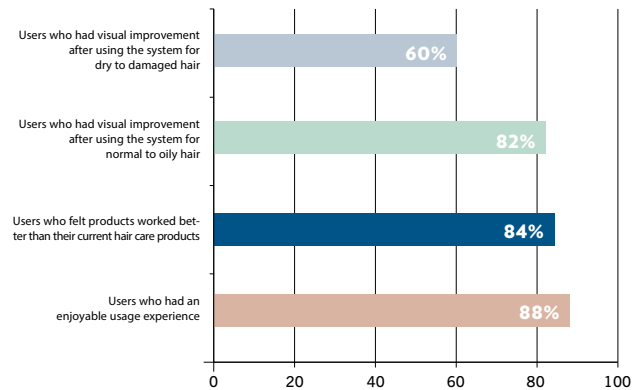
	Use with Weightless Conditioner	Use with Rich Conditioner
Balancing Shampoo	If you have oilier hair and desire more volume	If you have normal to oily hair and want a sleek, straight style
Moisturizing Shampoo	If you have drier hair and want a moisturizing clean with volume and body	If you have dry or damaged hair and want a sleek, straight style

	1x a Week	2x a Week	3x a Week	More than 3x a Week
Clarifying Shampoo	Healthy, dry to normal hair	Oily hair or hair exposed to environmental pollution	Very oily hair and hair exposed to environmental pollution (i.e., swimmer's hair)	Very short and very oily hair exposed to environmental pollution
ReNu Hair Mask	Healthy, normal hair	Slightly damaged, treated, or dry hair	Heavily treated hair	Heavily treated, very dry hair

CONSUMER USE STUDY

Three Steps to Visible Results in Just Seven Days*

Formulated with scientifically proven technologies and tested and proven to get visible results, Nu Skin Hair Care improves the condition of your hair by smoothing the cuticle for increased strength, shine, and manageability.



* Based on results from a study in which 42 participants volunteered to use a complete set of the Nu Skin Hair Care products for seven days. Caucasian and Asian participants between the ages of 18-64 and with medium to long hair were selected and randomly assigned to use a pair of shampoo and conditioner every day and the weekly conditioning treatment once within the week.

