

# NU SKIN 180° PREP AMPOULE

Nu Skin 180° 奇蹟修護安瓶



NEW

# NU SKIN 180° PREP AMPOULE

淡化皺紋亮白肌膚雙重功效保養品

Dual acting cosmetic to reduce the appearance of wrinkles and brighten up the skin



1.

## 親膚養分輸送系統

Bioaffinity skin delivery system

以神經醯胺，一種以皮膚屏障主要組成成分為基礎的親膚養分輸送系統，有助促進肌膚吸收

The bioaffinity skin delivery system is based on ceramide, a major component of the skin barrier, enhancing skin absorption

2.

## 以獨特及有助紓緩肌膚的保濕成分 提升三重酸效果

Amplified triple acid effect with unique skin-soothing moisture

深海微生物萃取物及100%純積雪草水，比純淨水更能紓緩肌膚

The deep-sea microbial extract and 100% pure Centella Asiatica water soothes skin better than purified water

3.

## 充分提升皮膚能量 促進健康的皮膚代謝

Maximize the skin's energy to boost healthy skin turnover

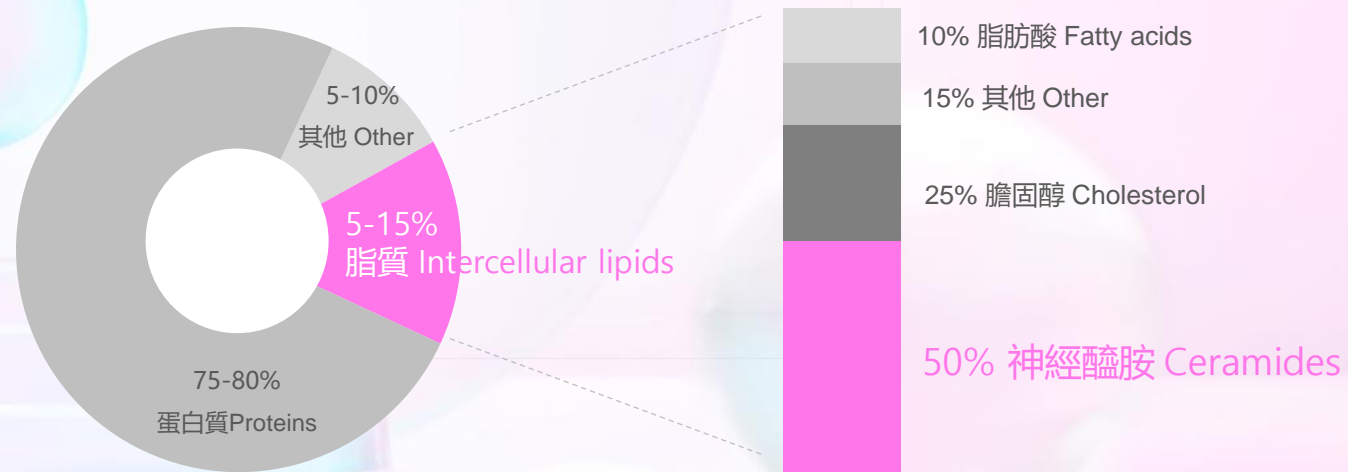
南極微生物萃取物及EGF(生長因子蛋白)，能保護肌膚、增強活力和完善健康的代謝週期

Antarctic microbial extracts and EGF (growth factor protein) protect the skin and boost vitality to perfect a healthy turnover cycle

# B I O D E

親 膚 養 分 輸 送 系 統  
Bioaffinity skin delivery system

## 皮膚屏障的組成成分 Components of the skin barrier



在皮膚屏障的脂質中發現了解決方法!

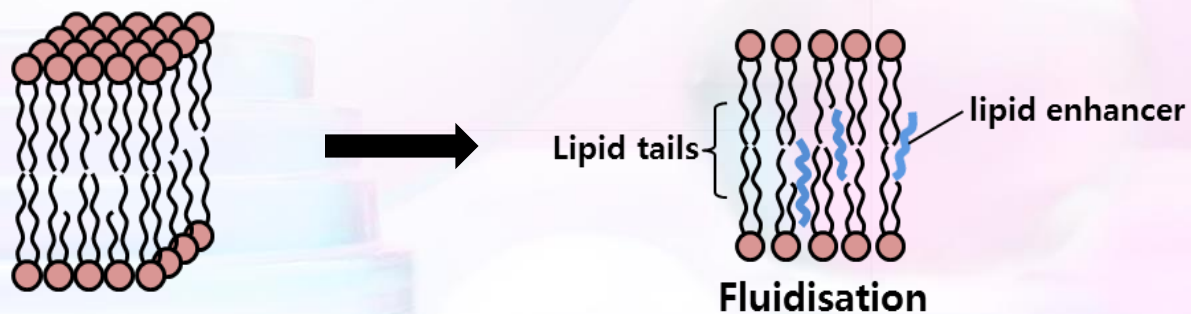
A solution has been found in the lipids of the skin barrier!

# B I O D E

親 膚 養 分 輸 送 系 統  
Bioaffinity skin delivery system

Q: 有沒有一種簡單有效的方法，在保護皮膚屏障的同時，能將活性成分輸送給皮膚？  
Is there a simple and effective way to deliver active ingredients to the skin while protecting the skin barrier?

A: 使用肌膚與生俱來的脂質成分作為皮膚輸送的載體！  
Use a skin delivery carrier based on lipids that already exist in the skin!



親膚物質促進皮膚屏障的健康，提升傳遞能力！  
Bioaffinity substances boost the health of the skin barrier while enhancing delivery!

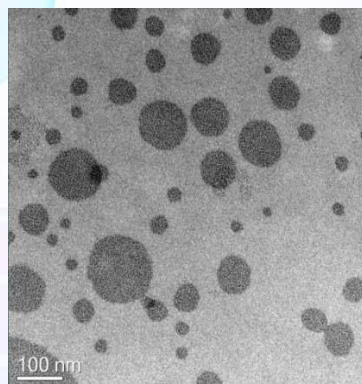
# BIODE

親 膚 養 分 輸 送 系 統  
Bioaffinity skin delivery system

以皮膚屏障組成成分，神經醯胺為基礎的皮膚吸收複合物

A skin absorption complex based on ceramide, a component of the skin barrier

## WHY BIODE #1



比一般乳液粒子明顯更細小，由100-200 納米微粒所組成的穩定複合物

The stable complex is made up of fine 100-200nm particles that are significantly smaller than ordinary emulsions

BIODE

細小而沒有結晶化的均勻粒子

Fine, uniform particles that aren't crystallized

一種優質的微粒複合物，具有強大的皮膚輸送能力

A superior fine-particle complex with robust skin delivery potency

\*製造商對於有助增強皮膚吸收的複合物的性質測試結果

\*Result from manufacturer tests on the properties of the skin absorption enhancing complex

韓國及美國專利

Korea and US Patent

# BIODE

親 膚 養 分 輸 送 系 統  
Bioaffinity skin delivery system

以皮膚屏障組成成分，神經醯胺為基礎的皮膚吸收複合物

A skin absorption complex based on ceramide, a component of the skin barrier

## WHY BIODE #2

BIODE的  
人造皮膚相容性測試  
Biocompatibility testing on  
artificial skin



BIODE  
卓越的生物相容性  
Superior biocompatible affinity

通過人造皮膚測試認證的生物相容性

Biocompatibility confirmed through artificial skin tests

\*製造商對於有助增強皮膚吸收的複合物的性質測試結果

\*Result from manufacturer tests on the properties of the skin absorption enhancing complex

# BIODE

親 膚 養 分 輸 送 系 統  
Bioaffinity skin delivery system

以皮膚屏障組成成分，神經醯胺為基礎的皮膚吸收複合物

A skin absorption complex based on ceramide, a component of the skin barrier

## WHY BIODE #3

### BIODE活性成分輸送力 比較臨床測試

Clinical trial comparison on BIODE's  
delivery of active ingredients

控制組  
Control



通過 *In vivo* 體內測試確認活性成分輸送力

Delivery of active ingredients tested *in vivo*

\*慶熙大學皮膚生物科技中心對有助增強皮膚吸收的複合物的性質實驗結果

\*Results from Kyung Hee University Skin Biotechnology Center tests on the properties of the skin absorption enhancing complex

# 積雪草葉水

CENTELLA ASIATICA LEAF WATER



蘊含多種有助紓緩肌膚的活性成分

Contains active ingredients that soothe the skin

積雪草苷, 羥基積雪草苷, 積雪草酸, 羥基積雪草酸  
Asiaticoside, Madecassoside, Asiatic Acid, Madecassic Acid

俗稱 Known as: 老虎草 Tiger Grass

以100% 純積雪草葉水取代純淨水

100% pure Centella Asiatica water instead of purified water

透過紓緩及滋養皮膚,  
令煥采再生修護液的主要成分 — 三重酸  
發揮作用

Aids triple acids, the major ingredients of the renewal fluid,  
by soothing and moisturizing the skin



# DEEP-SEA MICROBIAL EXTRACT

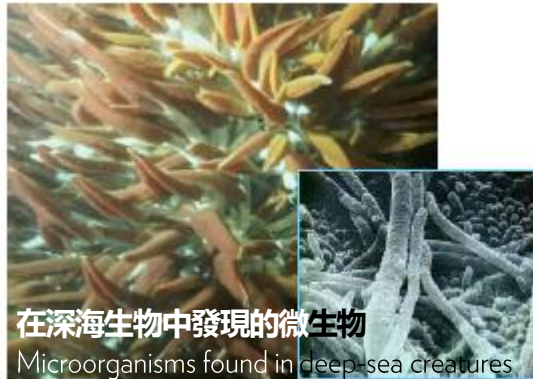
## 深海微生物萃取物

### 在深海貧瘠環境中生存的生命粒子 從深海生物的微生物中提取

The particles of life that survived the harsh deep-sea environment  
Extracted from microorganisms found in deep-sea creatures

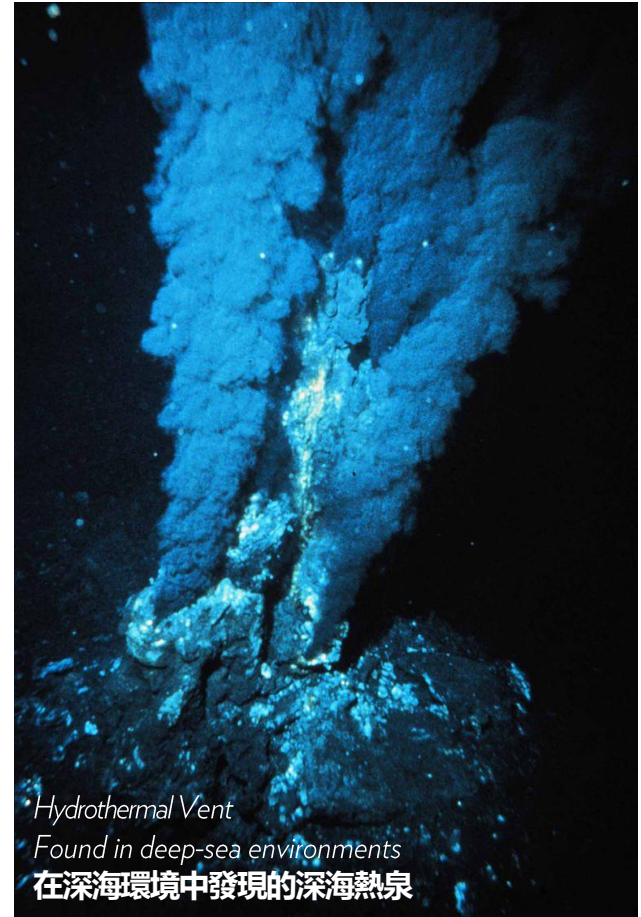
一個複雜而堅固，並存在於海洋以下3000米的高溫/高壓深海熱泉，  
用以保護微生物的屏障

A sophisticated and firm barrier protects microorganisms and is found in the high temperature and high-pressure hydrothermal vents 3,000 meters below in the ocean



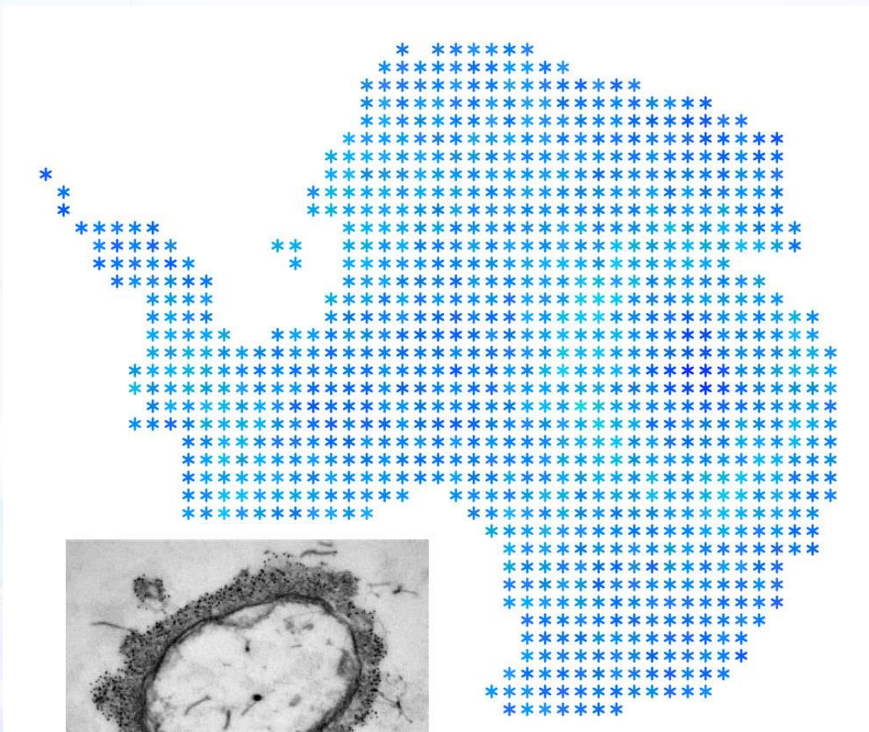
### 保護脆弱皮膚免受化學及物理刺激

Protects sensitive skin from chemical and physical irritation



# ANTARTICINE

南極海醣蛋白 - 從南極冰川提取的微生物萃取物  
Antarticine - Microbial extract from Antarctic glaciers



*Pseudoalteromonas Antarctica NF3*

南極金佐治島 King George Island, Antarctica  
低溫微生物 Cryogenic microorganisms  
(*Pseudoalteromonas Antarctica NF3*)

這種生命力頑強的微生物能在嚴苛的極端條件下存活，因為它能形成一層薄膜，以保持水分，防止結冰

The vigorous microorganism can survive in extreme conditions by forming a film that maintains its moisture and prevents it from freezing

提升肌膚能量，促進健康的代謝

Boost the skin's energy to promote a healthy turnover

# EGF

Epidermal growth factor proteins

表皮生長因子蛋白

由53個氨基酸組成的蛋白質分子

Protein molecule consisting of 53 amino acids

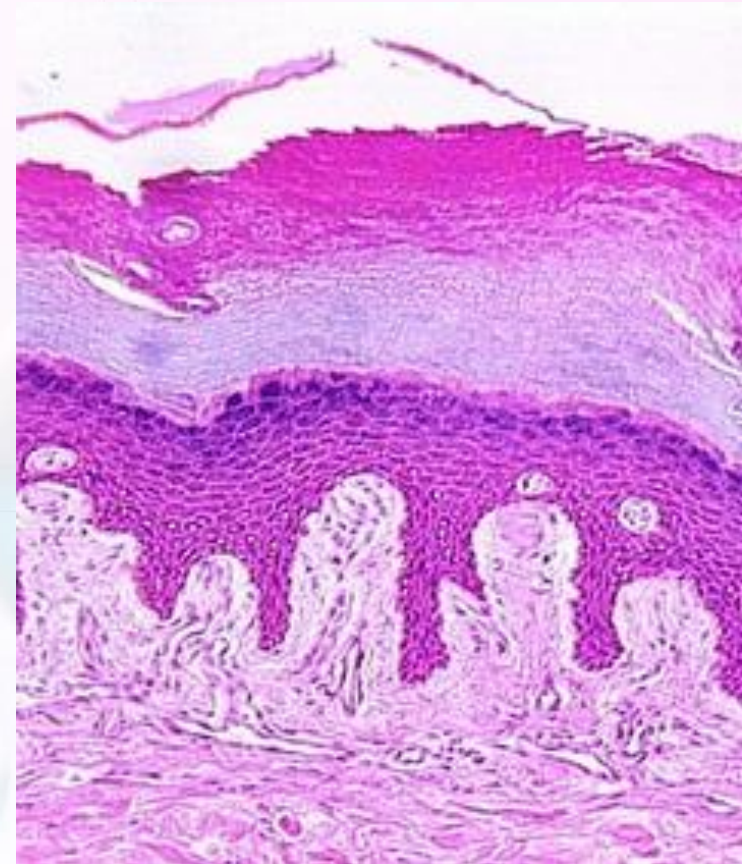
這種打造健康皮膚的關鍵成分因年齡增長而逐漸減少

This key component of healthy skin decreases with age



提升肌膚能量，促進健康的代謝

Boost the skin's energy to promote a healthy turnover



# 建議使用方法

## Recommended application



從未使用過180°煥采再生系列的人士

For those who have never used 180°

第一次使用果酸的人士

Those who are using hydroxy acid for the first time



曾使用180°過煥采再生系列的人士

For those who have used 180° before

希望克服初次使用產品後停滯不前的人士

Those who wish to overcome the stagnation of products after first use



想要充分發揮180°煥采再生系列功效的人士

For those who want to maximize the effects of 180°

希望維持護膚及煥活肌膚代謝功效的人士

Those who wish to maintain skincare and turnover effects



使用2星期

Apply for 2 weeks



使用2星期

Apply for 2 weeks



使用180°煥采再生系列

Apply system



使用2星期

Apply for 2 weeks



持續使用

Continue application

# 建議使用次序

Recommended order

使用180°煥采再生系列作為晚間護膚程序

Nighttime skincare routine with Nu Skin 180° Skin Activating System



潔面  
Wash

煥采再生潔面乳  
Nu Skin 180° Face Wash



均勻肌膚  
Even Skin

煥采再生爽膚水  
Nu Skin 180° Anti-Aging  
Skin Therapy Skin Mist



肌膚更新  
Skin Turnover

煥采再生修護液  
Nu Skin 180°  
Cell Renewal Fluid



護膚準備  
Preparation

1 支奇蹟修護安瓶  
1 Prep Ampoule bottle



保濕及保護  
Moisturize and Protect

煥采再生修護晚霜  
Nu Skin 180°  
Night Complex

# 使用說明

## Instructions

1

打開安瓶前，如圖輕輕搖晃瓶身2至3下。

Before opening the ampoule, lightly shake the ampoule 2 - 3 times as shown.



2

雙手握住安瓶的頂部及底部，折斷頂部即可打開。

Hold the lower and upper of the ampoule with both hands, then bend the top to open the container.



3

將精華倒在指尖或手背上，均勻塗抹於面上以助吸收。每次請使用一整支安瓶。

Empty the contents on your fingertips or the back of your hand and spread it evenly on your face to absorb it. Use the whole bottle for each application.

